

KILFINAN PARISH

A CELEBRATION OF PLACE

Place Planning with a Climate Lens

Kilfinan Parish

2025



Contents

| | |
|------------------------------|--------------|
| What is place planning? | Page 3 |
| Local context and engagement | Page 4 – 5 |
| Proposals Mind map | Page 6 |
| Parish boundary map | Page 7 |
| Proposals Mapping | Page 8 – 10 |
| Proposals 1 - 44 | Page 11 – 13 |
| Proposals – next steps | Page 14 - 15 |
| Appendix | Page 16 |

Kilfinan Parish Place Planning

Local Place Plan – Draft

Oct 2025

What is Local Place Planning (LPP) with a Climate Lens?

“Place Planning with a Climate lens can help communities consider climate change mitigation (how their place will transition to a net zero future when fossil fuels are no longer used) and climate change adaptation (how their place could better cope with extreme weather as the climate changes)”
ourplace.scot 2025

ABCAN (Argyll and Bute Climate Action Network) and a local steering group have been supporting Kilfinan Parish Community Council and our local communities to have these conversations and create community proposals to feed into our next Local Development Plan, 2028-2038.

Local Place Planning and it's relationship with the Local Development Plan and National Planning Framework 4

The NPF4 is a long term plan for Scotland until 2050.

Local Place Planning with a climate lens fits well with NPF4's orientation toward climate change, sustainable communities and reaching net zero with a particular focus on building -

- Sustainable places
- Liveable places
- Productive places

Key Policy Areas within the NPF4 pertinent to the Kilfinan Parish proposals

Tackling climate and nature crisis
Climate mitigation and adaption
Biodiversity
Natural Places
Forestry, woodland and trees
Historic assets and places
Brownfield land, vacant and derelict land, empty buildings
Coastal development
Energy
Zero Waste
Sustainable transport
Local Living and 20 minute neighbourhoods
Quality homes
Rural homes
Flood risk and water management
Digital Infrastructure
Rural Development
Tourism and, Aquaculture

Local Place Planning with a Climate Lens

Community Engagement

This is our first place plan conversation and we hope it will prove to be an ongoing conversation between our local parish and Argyll & Bute Council in developing rural solutions that sustain our vibrant rural coastal communities now and into the future.

Finding healthy and resilient ways to live and thrive rurally has been on our communities' agenda for many years. This engagement helped spark wide-ranging conversations around current challenges and opportunities to protect, strengthen and restore our whole community.

These proposals have been developed following many months of engagement within the parish. We had a number of events through-out the year listening to stories and aspirations about the well-being of our whole community, organising events and awareness sessions, supporting groups as well as consulting on place planning. They have also drawn on parallel projects and consultations from other community groups and organisations.

(See Appendix 1 for community engagement)

Our Community Proposals

“The lives of the people in our communities are intertwined with our natural environment.” (Comment from a community member during engagement)

The Kilfinan Parish landscape offers a wealth of opportunities for the people and communities that live here. Overwhelmingly through-out our engagement and the engagement by other local organisations and partners at the same time, our communities speak to protect, restore and enhance all our natural environments and to continue to build and restore our relationship to them.

We recognise that the richness of our lives here - our culture and heritage, our health and wellbeing, our local economy and tourism - are connected with our natural places. Across the peninsula we have a network of community organisations, land and sea based businesses, other local businesses, our school, families and individuals that are working together to diversify and restore our land and sea scapes and to make sustainable decisions so our communities thrive now and into the future.

Through our highly valued community owned projects we are proving that when we are directly involved in the long term care of our places that we choose not only to protect these places but to site sustainability, community health and wellbeing and biodiversity at its heart. This in turn sees an increase in our own health and wellbeing, our culture and education, our skills, our local economy and our sense of community.

The information and stories gathered during this extensive engagement have been largely qualitative by nature. Some issues and themes have been talked about more frequently than others and so proposals have been grouped together using these themes. Together, however the issues and themes are interlinked and speak to a broader interest and curiosity around our areas long term resilience.

Our communities voice has been strong in it's desire to build systems locally that meet our needs, to take direct action to mitigate and adapt to climate change, to protect and restore all of our natural environments, to develop solutions for local living that speak to retaining and increasing our population and to look at ways to work together more effectively.

The following proposals look to strengthen our communities resilience and build on current patterns of land use and care that are working. We recognise the huge amount of skills, experience and ambition we have in our communities and want to tap into these as we embark on a plan to implement these proposals.

Kilfinan Parish

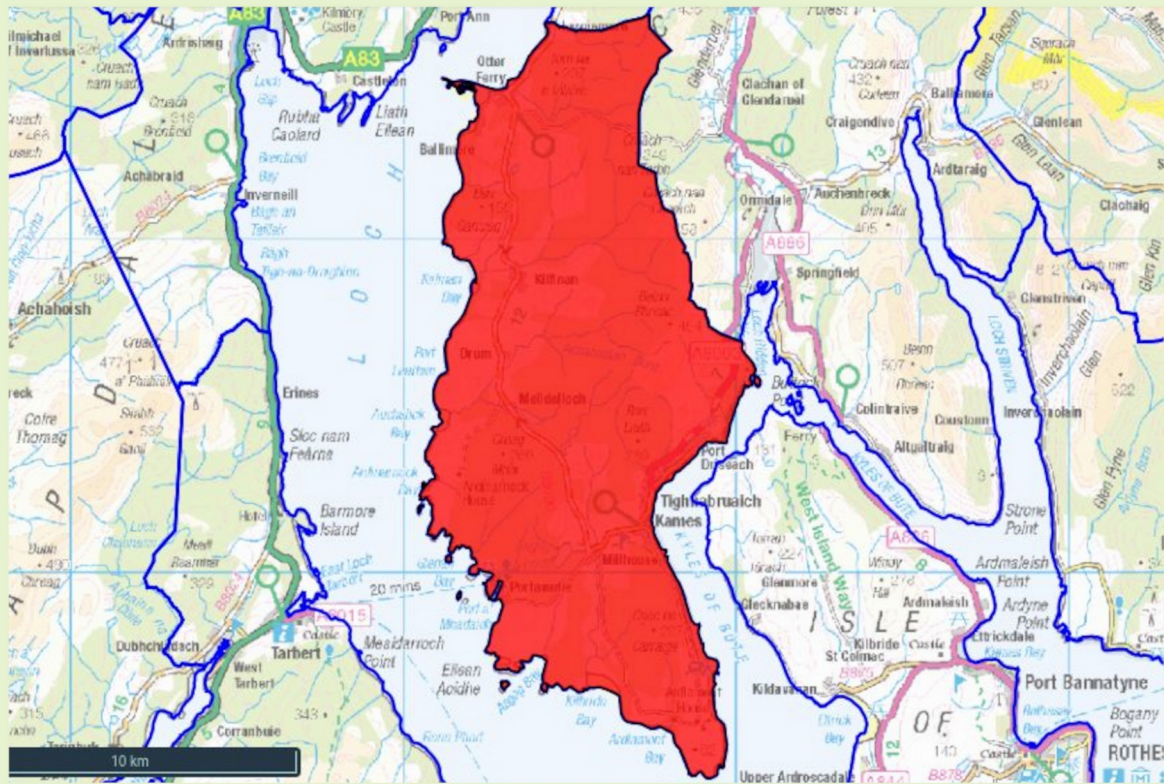
Community Resilience and Local Place Planning with a Climate Lens

Mind map of themes and proposals



Area covered by Kilfinan Parish Local Place Plan

Kilfinan Parish Boundary



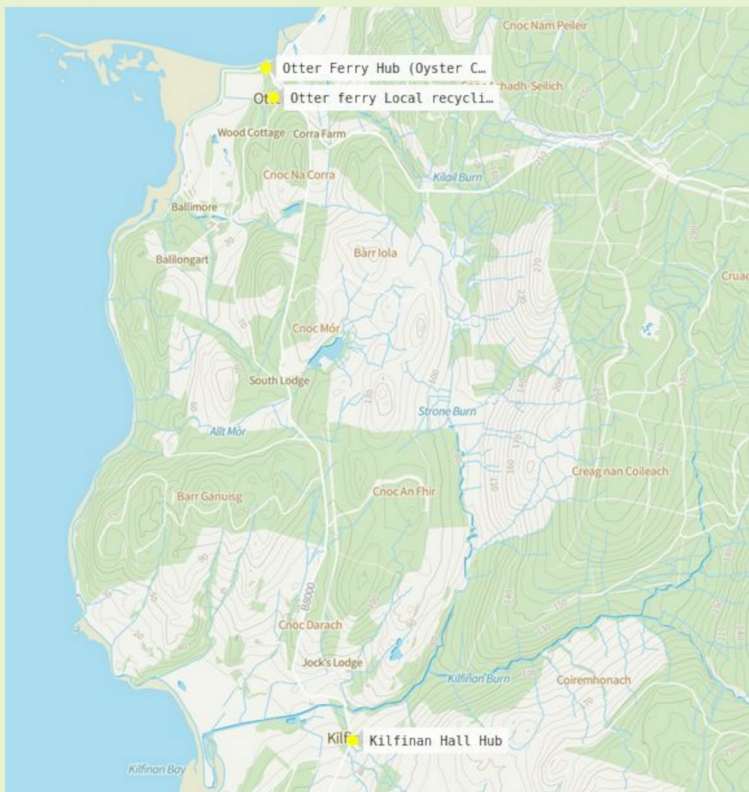
Map by Parish Online

Kilfinan Parish Local Place Plan Proposals Mapping

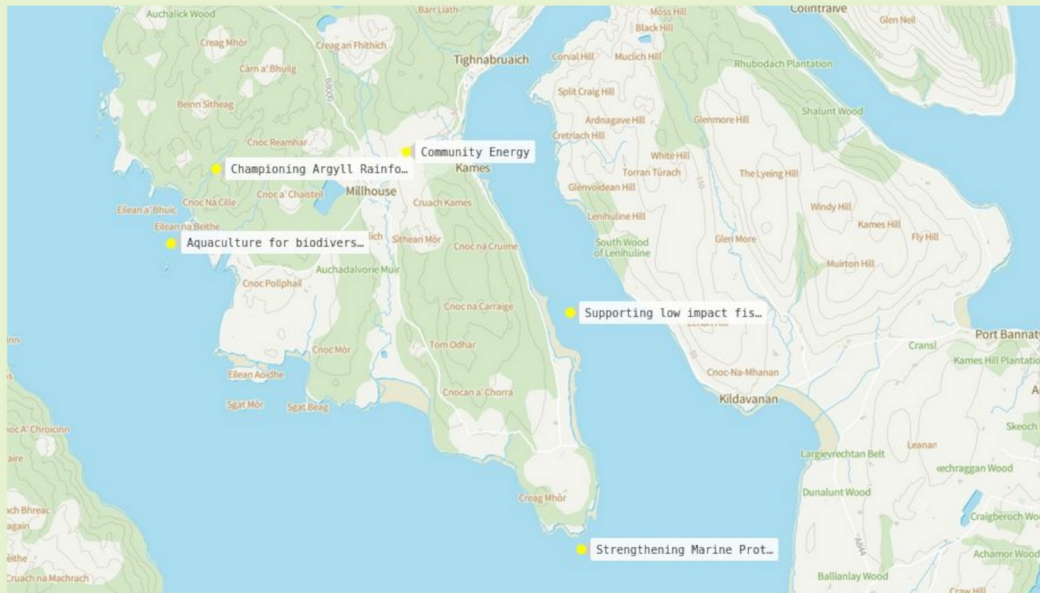
The following four maps show mapping of proposals across the parish.

All maps are OS through Myforest.

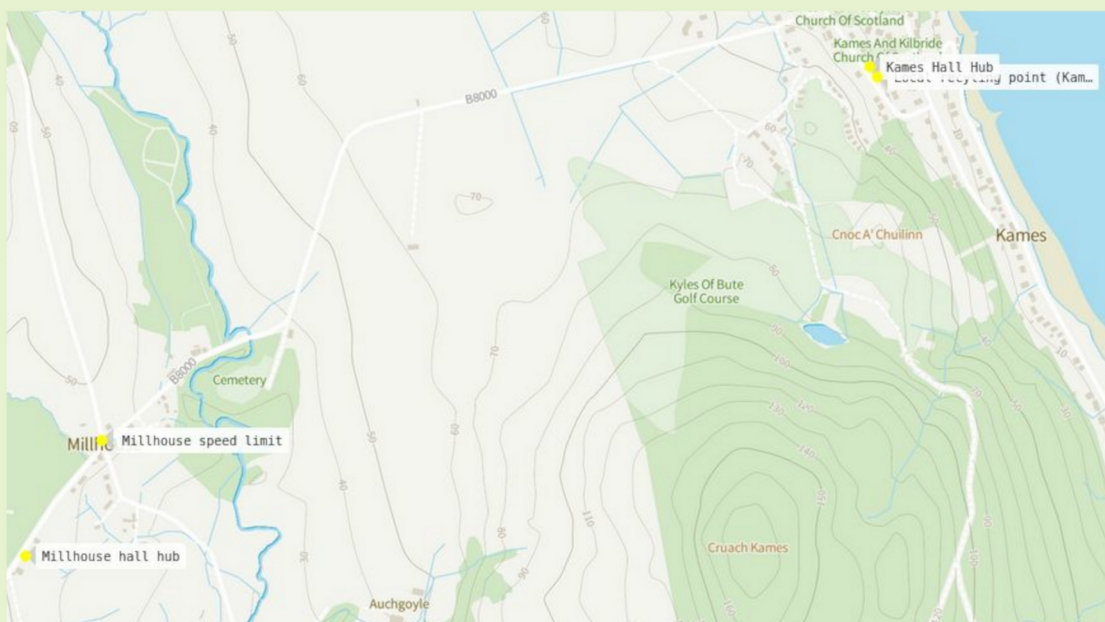
Kilfinan Parish Proposals Map



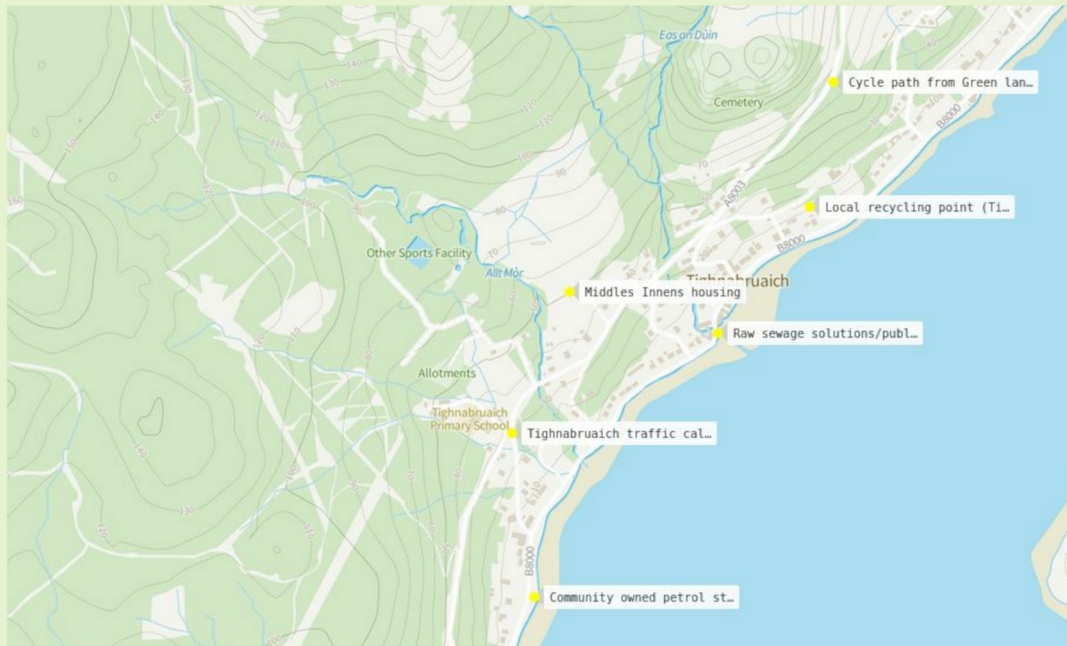
Kilfinan Parish Proposals Map



Kilfinan Parish Proposals Map



Kilfinan Parish Proposals Map



Proposals

Key: LPP – Proposals pertinent to Local Development Plan
CA – Proposals to be actioned at a community level

Moving Around

1. **LPP** - We demand a reliable and responsive bus service that continues through-out school holidays so that people can continue to access shops and vital services and young people can move around independently.
2. **LPP** - Traffic calming measures in Millhouse.
3. **LPP** - Traffic calming measures in Tighnabruaich, especially around school start and end times. Official cycling road sign to be put up here and across the parish. These measures would work toward encouraging children and young people to cycle to school.
4. **LPP** - Walking and cycling path to link green lane with current path network along the A8003 to Tighnabruaich Primary school. This measure would work toward encouraging children and families to cycle to school.
5. **LPP** - Reduce water and flooding locally by implementing robust water management systems along road and path networks. This should be combined with increased road and path maintenance. Map the areas affected and create a plan of action. (Map of areas to be added after Nov CC meeting)
6. **CA** - Updated mapping of walking and cycling paths in and around the parish, including forestry tracks and finding a way to maintain these networks.
7. **CA** - Revisiting the plan to implement a walking and cycling path to link Kames with Poltalloch road to enable young people to walk and cycle to school without using the road.
8. **CA** - Investing in community transport scheme
9. **CA** - Community electric bikes scheme for use by community and visitors

Our Natural Places: Land and Sea

10. **LPP** - To protect and restore our woodland environments and mature trees across the parish. No mature trees to be felled for housing development.
11. **LPP** - Support the restoration of all our rainforest habitat and work with ACT on the Argyll Rainforest Strategy
12. **LPP** - To support low impact fishing in our communities that allows the regeneration and restoration of our marine environment and fish stocks.
13. **LPP** - To strengthen and expand marine protection from scallop dredging and bottom trawling in Loch Fyne and across all the coastal waters of the parish. This will protect, restore and enhance our marine environment and fish stock.
14. **LPP** - To protect sensitive Priority Marine Features at Ardlamont Point through protection from all mobile gear including bottom trawling or scallop dredging.

15. **LPP** - No new development or expansion of current fish farms until environmental and animal welfare concerns in the industry are addressed.
16. **CA** - To increase connections between and awareness of land and forest restoration work that is already happening in our communities by landowners, community ownership projects, agriculture and forestry and local gardens.
17. **CA** - Encourage gardening for biodiversity and food production
18. **CA** -To identify and work with local forestry owners and partners to ensure that long term forestry plans provide community benefit, restore and enhance rainforest ecosystems, and work toward continuous cover forestry approaches.
19. **CA** -Work with local landowners, Nature Scot and deer management group to tackle deer issue in our parish and across Argyll.
20. **CA** - Work with council and local landowners to tackle INNS

Rural Development and housing

21. **LPP** -To provide more affordable and social housing for people to live in the area, particularly provision to allow young people to age in place. All housing to have renewable energy with battery storage and large gardens to enable food growing. This should apply to Middle Innens development.
22. **LPP** - Working with local landowners to identify land to support the further creation of crofts, woodland crofts, small farms and smallholdings on an ongoing basis. This will build on the success of croft creation in our area, provide further social, economic and environmental benefits and support our local rural regeneration.
23. **CA** - Community organisations and other local housing partners including ACHA and Fyne Homes to work together to fund a local and ongoing youth engagement and skills programme and continue to look at ways to support young people to age in place, which includes housing.
24. **CA** – To Support rural regeneration and retain all our young families by looking at ways to provide 0-3 child care in the area.
25. **CA** – To support the right to stay for our vulnerable and elderly community and find ways to strengthen and develop diverse care in the community for these groups.

Energy

26. **LPP** - To support the purchase of the local petrol station by the community to provide fuel, fast EV hook up and community accessible bike maintenance workshop. The building may have solar panels to provide energy to pumps during power outages.
27. **LPP** - To build on the strengths and opportunities already provided by the community energy scheme at Kilfinan Community Forest. To work together to look at ways of expanding our local community owned energy with possible small wind turbine at the moss.

28. **LPP** -Increased EV charging points in our own communities and through out Argyll and Bute. In our own communities these can be situated at the proposed community owned petrol station.
29. **LPP** – Renewable energy and storage batteries on local community halls in Kames, Millhouse and Kilfinan
30. **CA** – To increase the amount of benefit communities get from windfarm projects
31. **CA** - Warm homes via retrofitting and making sure all new builds have renewable energy

Emergency Planning

32. **LPP** - The creation of a joined up local resilience plan that works with all our coastal communities to ensure they are safe and warm during emergency situations. This includes creation of local hubs, kitting out village halls or other appropriate buildings with solar panels and storage batteries etc.
33. **CA** - Continue work with community organisations to update emergency planning and then share with every community household.

Zero Waste

34. **LPP** - To support affordable waste management solutions for private residences in Tighnabruaich to stop raw sewage being put out into the Kyles of Bute.
35. **LPP** - To stop raw sewage being put out into the Kyles of Bute from the public toilet in Tighnabruaich.
36. **LPP** - To make the public toilet free of charge.
37. **LPP** - To strengthen our local waste and recycling infrastructure across the parish through the creation of local food composting, plastics and textile recycling.
38. **LPP** - To introduce a local food waste collection scheme and manage this locally. This will reduce carbon emissions of food going to landfill and compost can be used locally to boost soil health.

Local Food

39. **CA** - Local community supported agriculture project
40. **CA** - Support for the West Cowal Deer Larder project
41. **CA** - Create a local food hub and develop closer links with local farmers, food producers

Community Governance and Cohesion

42. **CA** - Community organisations to work together on a shared portal and newsletter
43. **CA** – Supporting and developing intergenerational governance and increased partnership working with local community organisations and finding diverse ways for community members to contribute their ideas and skills.
44. **CA** – Sharing further learning around how climate change is affecting our communities now and into the future and what we can do about that.

Kilfinan Parish Local Place Plan Proposals – next steps

| Proposal No. | Status and Action being taken | Who is responsible for taking this proposal forward? |
|--------------|--|---|
| 1. | Live and ongoing | Kilfinan Parish Community Council Argyll and Bute Council West Coast Motors Calmac |
| 2. | Live Tighnabruaich Development Trust are leading this project | TDDT |
| 3. | Live Community Council meeting with community and council on roads and paths in Nov 2025 | KP CC |
| 4. | Live Community Council meeting with community and council on roads and paths Nov 2025 New walking and cycle path will require planning | Argyll and Bute Council KPCC TDDT |
| 5. | Live Community Council meeting with community and council on roads and paths in Nov 2025 Information to be mapped on locations and added to LPP final draft | Argyll and Bute Council KP CC |
| 6. | Vision ABCAN supporting with Active Travel workshop in November | ABCAN Local community |
| 7. | Vision ABCAN supporting with Active Travel workshop in November | ABCAN Local community |
| 8. | Vision Next steps would be to do a feasibility study | KP CC and local community |
| 9. | Vision Cycle UK will long term loan rural communities a fleet of bikes. We would need a place to store the bikes and an organisation to take care of the loan system. | Local community organisations |
| 10. | Live and ongoing A&B council to implement through planning | A&B Council |
| 11. | Live | A&B Council |

| | | |
|----|---|--|
| | ACT implementing through-out the region including at Glenan Woods and other sites around Tighnabruaich | KPCC ACT |
| 12 | Live | A&B council KP CC Local Community |
| 13 | Live Engaging with The Scottish Government consultation in Nov 2025 | A&B Council KPCC and other local community groups Openseas |
| 14 | Live Engaging with The Scottish Government consultation in Nov 2025 | A&B Council KPCC and other local community groups Openseas |
| 15 | Vision | A&B Council The Scottish Government |
| 16 | Vision Next steps – ABCAN and Glenan Woods working together to share feedback and maps from Future Forest event and look at next steps | ABCAN, Glenan Woods and other local landworkers and land owners |
| 17 | Live ABCAN - proposed event with KAG and gardening for biodiversity and food growing | ABCAN KAG Local community and gardens |
| 18 | Live | KPCC |
| 19 | Live Local Deer Management Group | Local deer management group NatureScot Local landowners |
| 20 | Live | A&B Council Local Landowners |
| 21 | Vision | A&B Council Fyne Homes ACHA |
| 22 | Vision ABCAN propose to support next steps with an event in local area | ABCAN and local community |

| | | |
|----|--|--|
| | ABCAN online workshop exploring Land Justice in Scotland, online Nov 24th | |
| 23 | Vision | KPCC A&B Council with Fyne Homes, ACHA |
| 24 | Live Community member is taking a lead on this issue with support from KPCC | Local Community, KPCC and A&B council |
| 25 | Vision | Local Community, A&B Council |
| 26 | Live Being actioned by TDDT on behalf of local community | TDDT |
| 27 | Vision | KPCC and local community |
| 28 | Live Plans for EV points at the community owned petrol station | TDDT |
| 29 | Live Inspiralba project led by Iain Waugh | Inspiralba and community halls |
| 30 | Live | KPCC and TDDT |
| 31 | Vision | Local community |
| 32 | Live Various community organisations working on this. TDDT accessing funding for generators for local halls. Iain Waugh/Inspiralba accessing funding for solar panels and storage batteries for Kames and Kilfinan halls. TDDT supporting local VETS and heartstart group | A&B council, TDDT Inspiralba, KPCC |
| 33 | Live KPCC leading on updating emergency planning with other relevant local community organisations | KPCC and other local organisations, first responders, emergency services and community members |
| 34 | Vision KCC and ABCAN supporting a local pilot project with private residents in Tighnabruaich | The Scottish Government, A&B council |
| 35 | Vision | A&B Council |

| | | |
|----|--|---|
| 36 | Vision | A&B Council |
| 37 | Vision | A&B Council KP CC |
| 38 | Vision | A&B Council |
| 39 | Vision ABCAN to explore this further with the community. Follow on from Food For Thought event. | ABCAN |
| 40 | Live West Cowal Deer Larder project | ACT |
| 41 | Vision ABCAN event to explore this further with the community. Follow on from Food For Thought event. | ABCAN |
| 42 | Vision | KPCC and other community organisations |
| 43 | Vision | KPCC and other local community organisations |
| 44 | Live ABCAN | ABCAN, A&B Council |
| | | |
| | | |

Appendix 1

ABCAN Community engagement March 2024-Oct 2025

- **Local Place Plan with Climate Lens survey** – 79 adults completed the survey, 5 young people completed the 12-18 version
- **4 producers markets** – 160 people engaged with
Feb Market – We asked: What would make our communities more resilient?
April Market – We shared LPP survey and asked : What do you like about your place?
What would make it better?What one thing would you priorities?
Summer Market – We asked: How can small rural communities take action to mitigate and adapt to impacts of climate change locally?
Oct market – We shared LPP proposals and asked for feedback
- **6 place plan drop in sessions across the parish** – 52 people attended
 - 2 x sessions to introduce place planning and the survey
 - 2 x session to share emerging findings and community solutions
 - 2 x sessions to co-create proposals
- **4 place plan events** – 130 people attended (Food for thought, Argyll Rainforest, Riverwoods, Glenan Future Forest)
- **Place Planning and Scotland demands workshops x 2 with Poverty Alliance** – 10 children and 10 Adults attended
- **Emergency planning meeting with Kilfinan Parish Community Council** – 25 people attended from local community and community organisations
- **Ocean film and discussion event with Kyles Coastal Community** – 43 people attended
- **Groups attended** – Young People’s cycling group, lunch club, women’s rural, local kids woodland group, yoga club, dancing group, TDDT
- **Local Business engagement** - 4
- **Other place planning engagement** – door to door, email, phone, one to one conversations

Other community engagement in the area

Kyles Coastal Community - Jobby Free Sea campaign

https://www.facebook.com/thekylescoastalcommunity/?locale=en_GB

TDDT Community Action Plan

https://www.tddt.org.uk/files/ugd/ab5414_75b1cf828e87494c907c433f7d11218c.pdf

TDDT consultation on Community Owned Petrol Station

Act – Argyll Rainforest Strategy

<https://www.act-now.org.uk/argyll-the-isles-rainforest-strategy>

Area wide community resilience with Inspiralba in Glendaruel